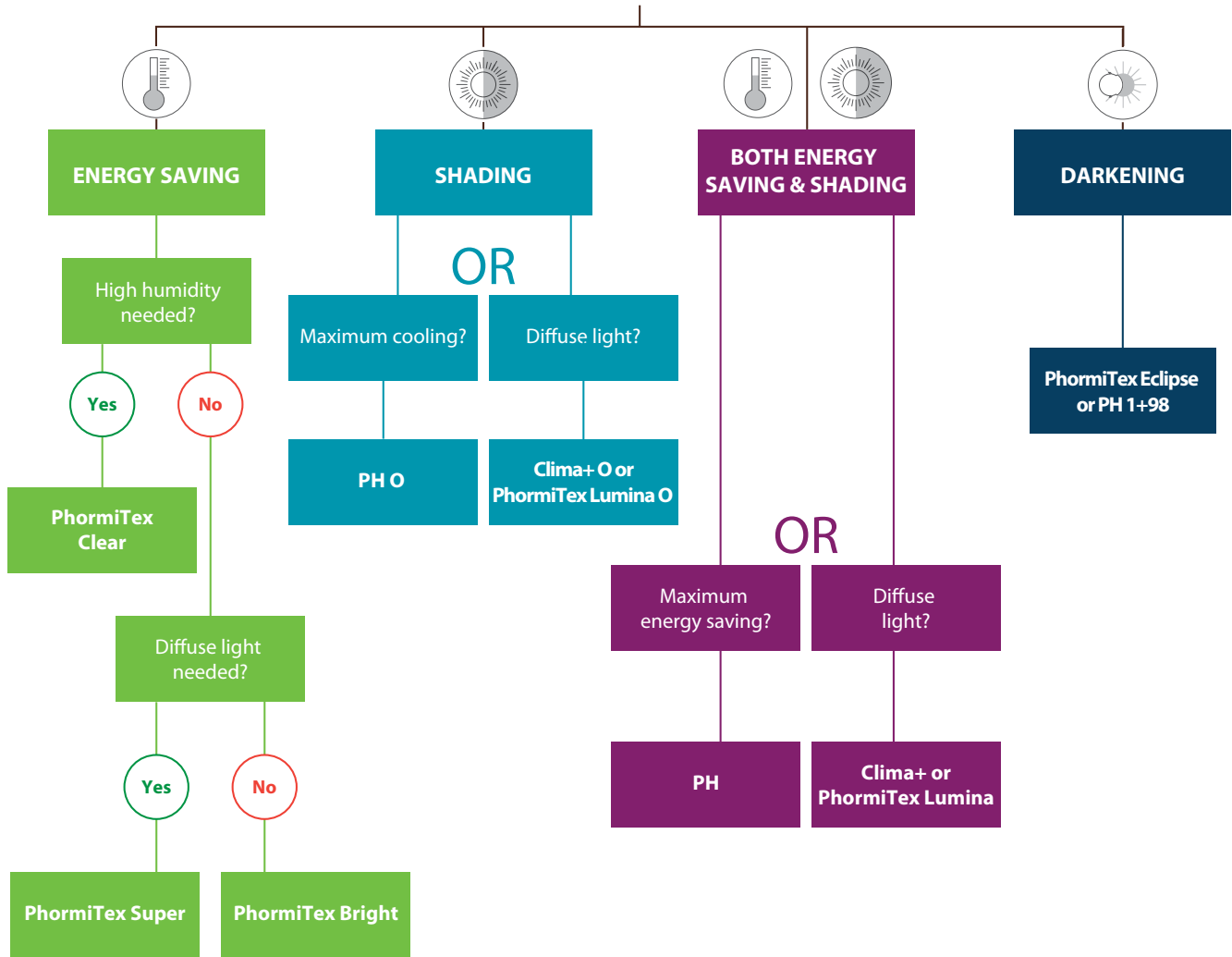




HOW TO CHOOSE WHICH SCREEN IN REQUIRED?





OVERVIEW SCREENS

Type	Standard widths (cm)					FR**	Energy saving %	Shading %
ENERGY SAVING SCREENS								
Phormitex Clear	325	*	430	480	530	Yes	47%	11%
Phormitex Bright	325	400	430	480	530	Yes	47%	13%
Phormitex Super	325	*	430	480	530	Yes	47%	15%
OPEN SHADING SCREENS								
PhormiTex Lumina 30 O	325	*	430	480	525	Yes	10%	30%
PhormiTex Lumina 40 O	325	*	430	480	525	Yes	15%	40%
PhormiTex Lumina 50 O	325	*	430	480	525	Yes	20%	50%
PhormiTex Lumina 60 O	325	*	430	480	525	Yes	25%	60%
Clima+ 35 O	325	400	430	480	525	No	10%	35%
Clima+ 45 O	325	*	430	480	525	No	15%	45%
Clima+ 55 O	*	400	430	480	525	No	20%	55%
Clima+ 65 O	*	*	430	*	525	No	25%	65%
PH 55 O	325	*	430	480	*	No	20%	55%
PH 66 O	325	*	430	480	*	No	25%	66%
PH 77 O	325	*	430	480	*	No	30%	77%
CLOSED SHADING SCREENS								
PhormiTex Lumina 30	325	*	430	480	530	Yes	47%	30%
PhormiTex Lumina 40	325	*	430	480	530	Yes	47%	40%
PhormiTex Lumina 50	325	*	430	480	530	Yes	47%	50%
PhormiTex Lumina 60	325	*	430	480	530	Yes	47%	60%
Clima+ 35	*	400	430	*	530	No	47%	35%
Clima+ 45	325	*	430	480	530	No	47%	45%
Clima+ 55	325	400	430	*	530	No	47%	55%
Clima+ 65	325	*	430	*	530	No	47%	65%
PhormiTex 44 (B)	335(B)	*	430(B)	475	525	Yes	50%	44%
PhormiTex 55 (B)	335(B)	400 (B)	430(B)	475	525	Yes	51%	55%
PhormiTex 66 (B)	335(B)	400 (B)	430(B)	475	525	Yes	60%	66%
PhormiTex 77 (B)	335(B)	400 (B)	430(B)	475	525	Yes	63%	77%
PH 44 (B)	335(B)	400 (B)	430(B)	480	530	No	52%	44%
PH 55 (B)	335(B)	400 (B)	430(B)	480	530	No	58%	55%
PH 66 (B)	335(B)	400 (B)	430(B)	480	530	No	63%	66%
PH 77 (B)	335(B)	*	430(B)	480	530	No	68%	77%
BLACK-OUT SCREENS								
PhormiTex Eclipse 98 + 1	325	400	430	480	530	Yes	78%	99,9%
PhormiTex Eclipse 98 + 98	325	400	430	480	530	Yes	91%	99,5%
PH 1	325	400	430	480	530	No	37%	96%
PH 1 + PH 1	325	400	430	480	530	No	60%	99%
PH 98 + PH 1	325	400	430	480	530	No	78%	99,9%
PH 98 + PH 98	325	400	430	480	530	No	91%	99,5%
GABLE SCREENS								
Phormilux outdoor	*	*	230	*	270	No	50%	20%
PHL 20	190	210	230	250	270	No	50%	16%
PhormiTex PHL 20	190	210	230	250	270	Yes	50%	20%
PHL 55	190	*	230	*	*	No	65%	55%
PHL WIT	190	210	230	250	270	No	60%	100%
Gev-Al/Wit	190	210	230	250	270	No	80%	100%
PhormiTex Crystal V	190	210	230	250	270	Yes	50%	14%

* On demand

** Flame Retardant

